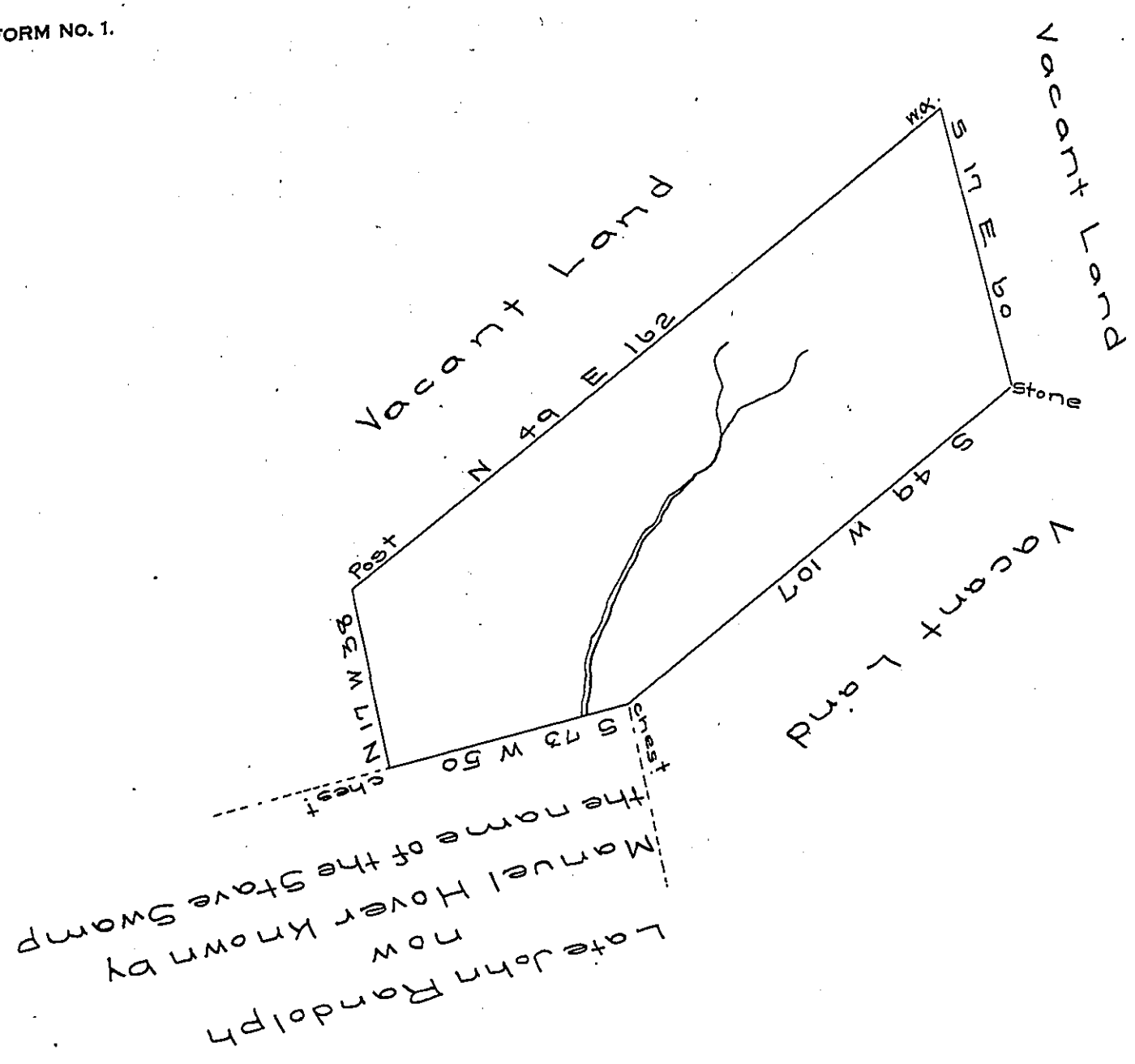


Lehman -
PIKE
✓



By virtue of a warrant dated the 5th January 1789 surveyed the 9th January 1789 to Barnaudus Swartwood the above described tract of land situate about one mile from Delaware River in Delaware township Northampton County containing forty nine acres and the allowance of six ¢ cent & a

¢ Geo. Palmer

John Lukens Esq^r }
Survey^r General }

IN TESTIMONY that the above is a copy of the original remaining on file in the Department of Internal Affairs of Pennsylvania, made conformably to an Act of Assembly approved the 16th day of February 1833, I have hereunto set my hand and caused the Seal of said Department to be affixed at Harrisburg, this twentieth day of March 1907.

Geo. E. Brown
Secretary of Internal Affairs.